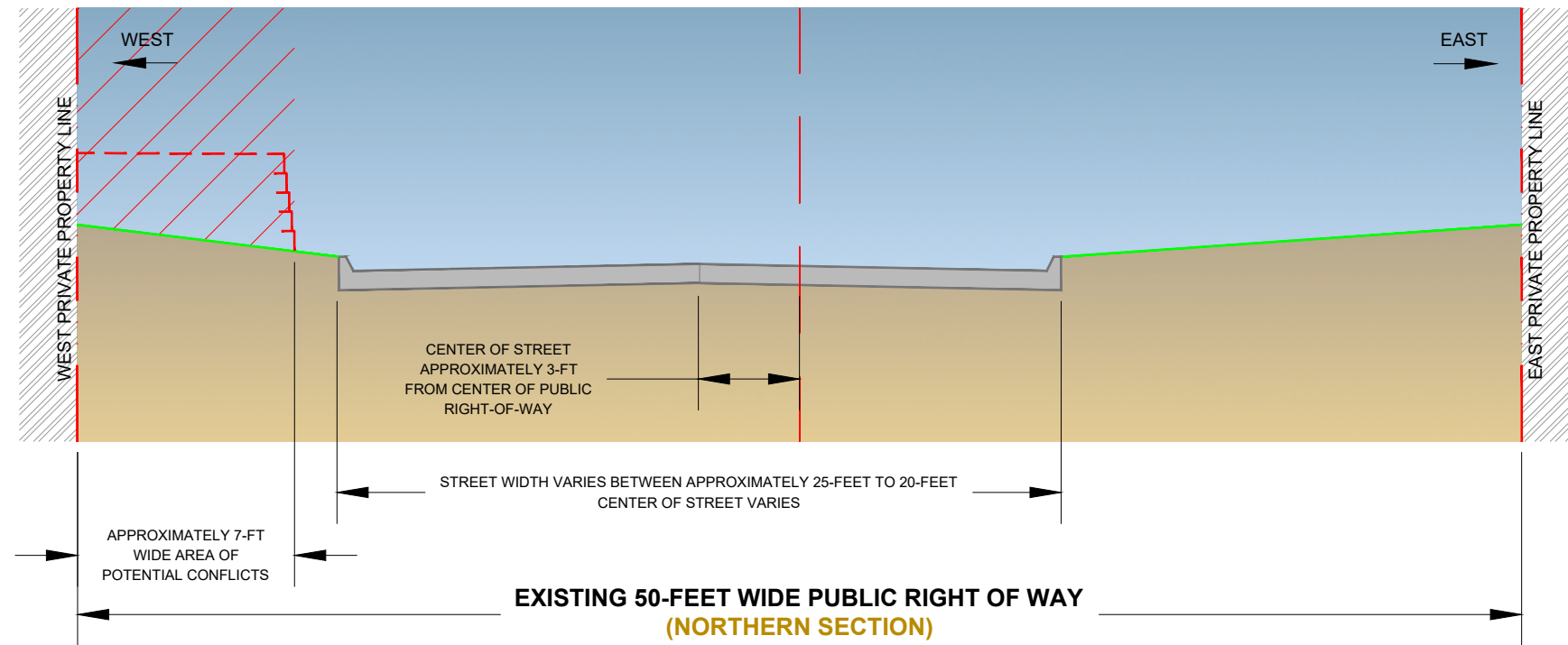
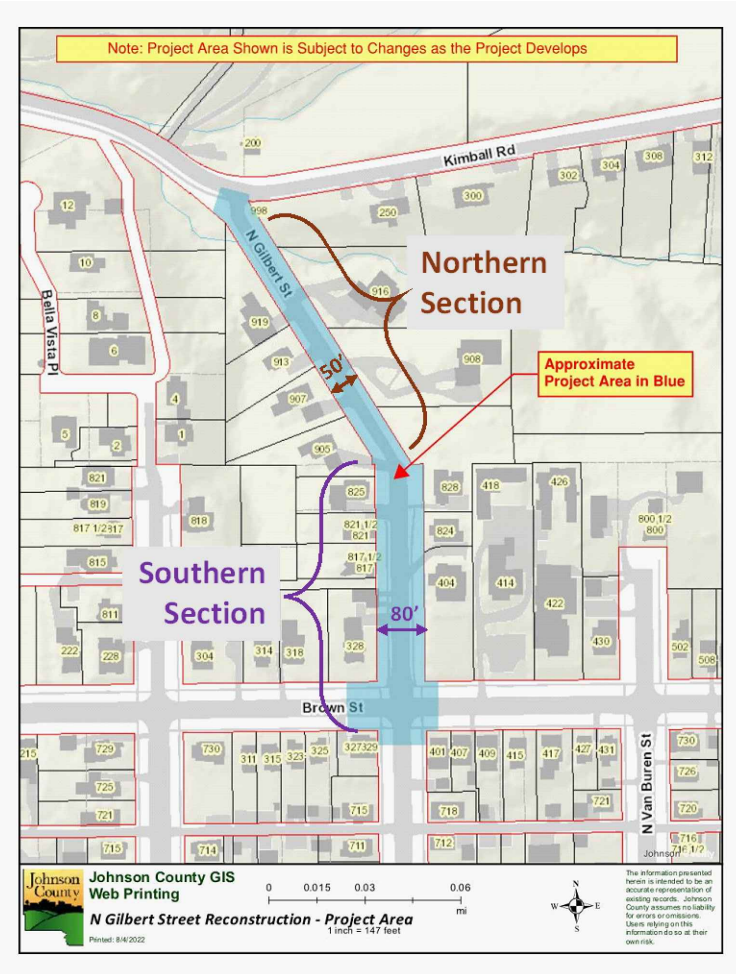
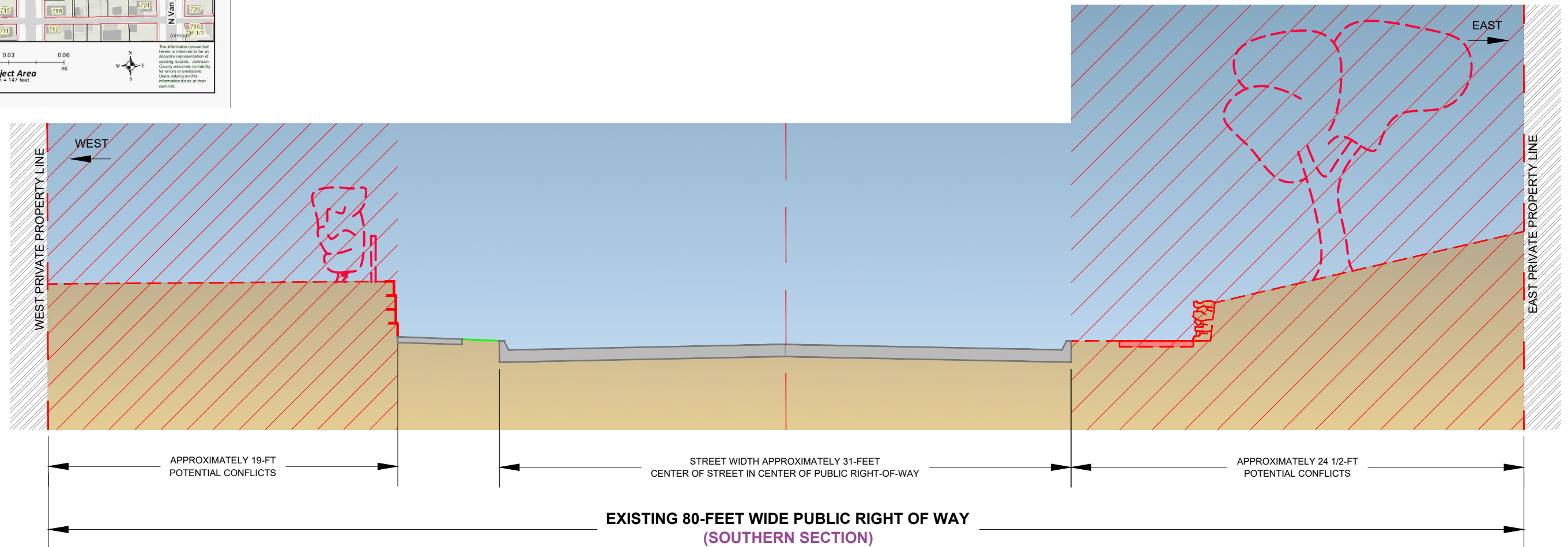


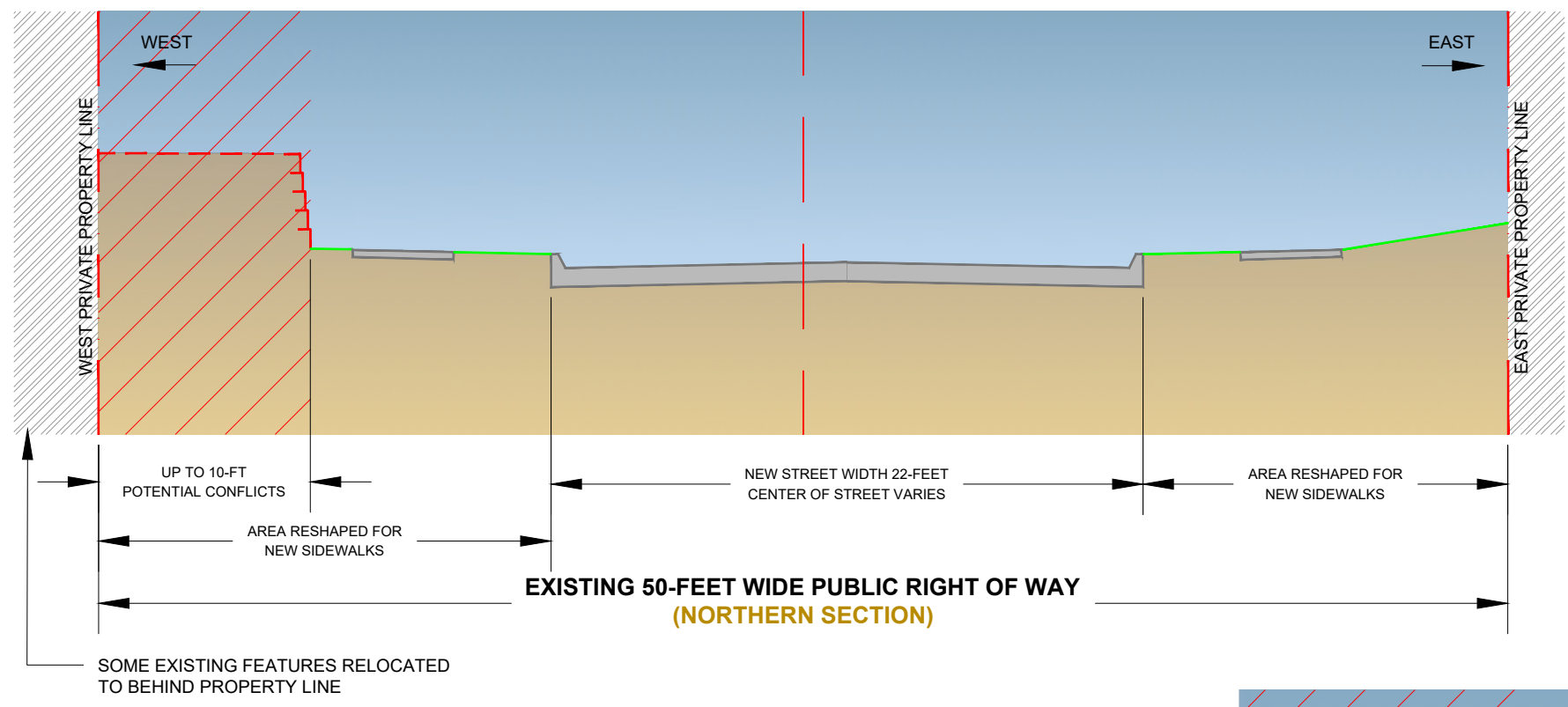
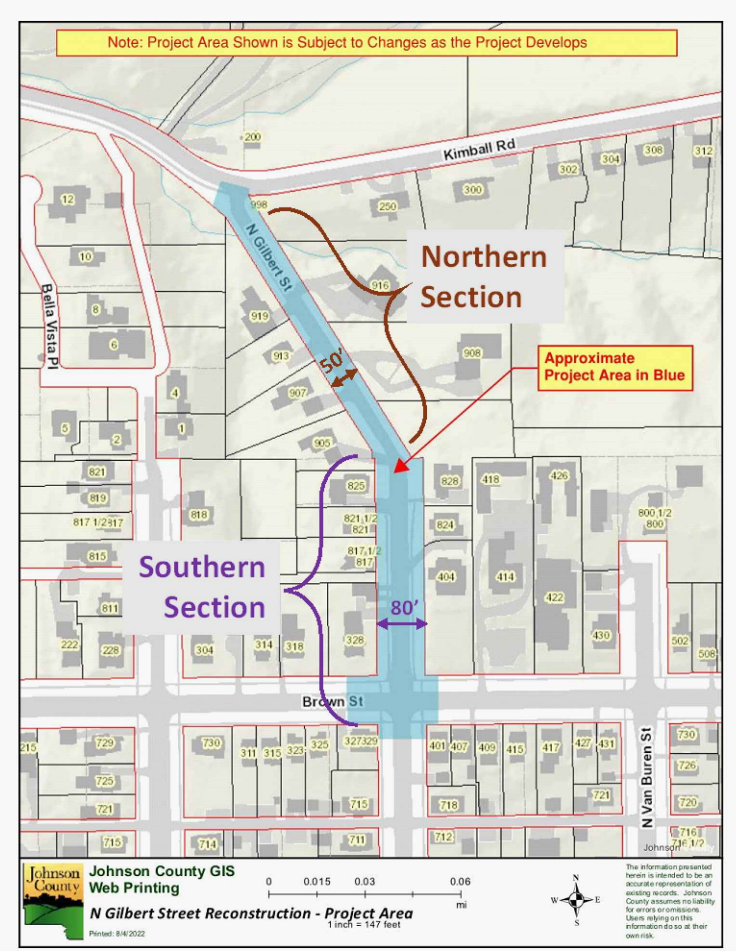
"EXISTING" TYPICAL CROSS SECTIONS



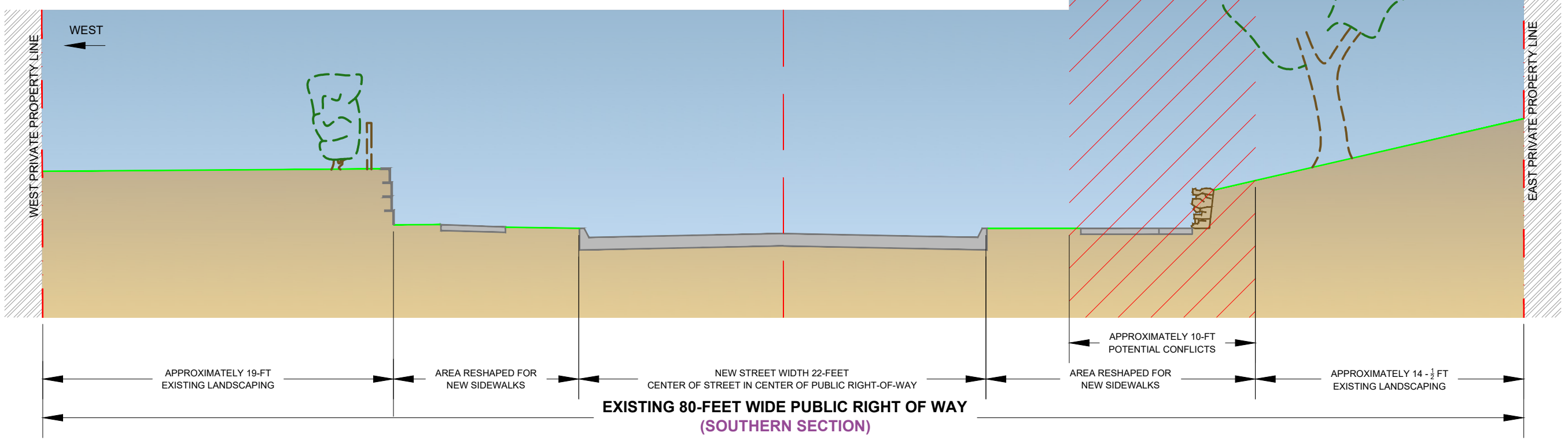
- NOTES**
- SOUTH SECTION CURRENTLY HAS ALTERNATING DAY ON-STREET PARKING
 - NORTH SECTION CURRENTLY DOES NOT PERMIT PARKING ANYTIME
 - EXISTING SIDEWALKS 4-FT WIDE



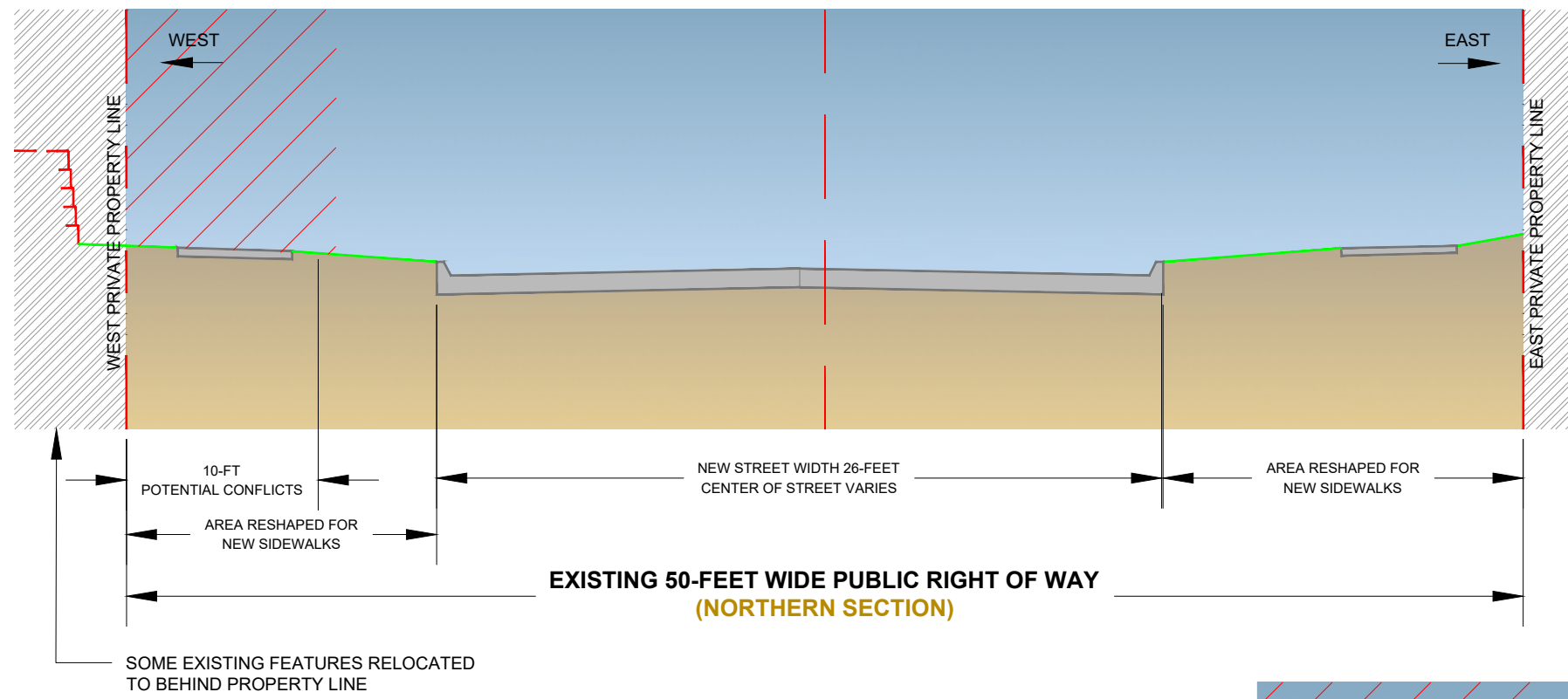
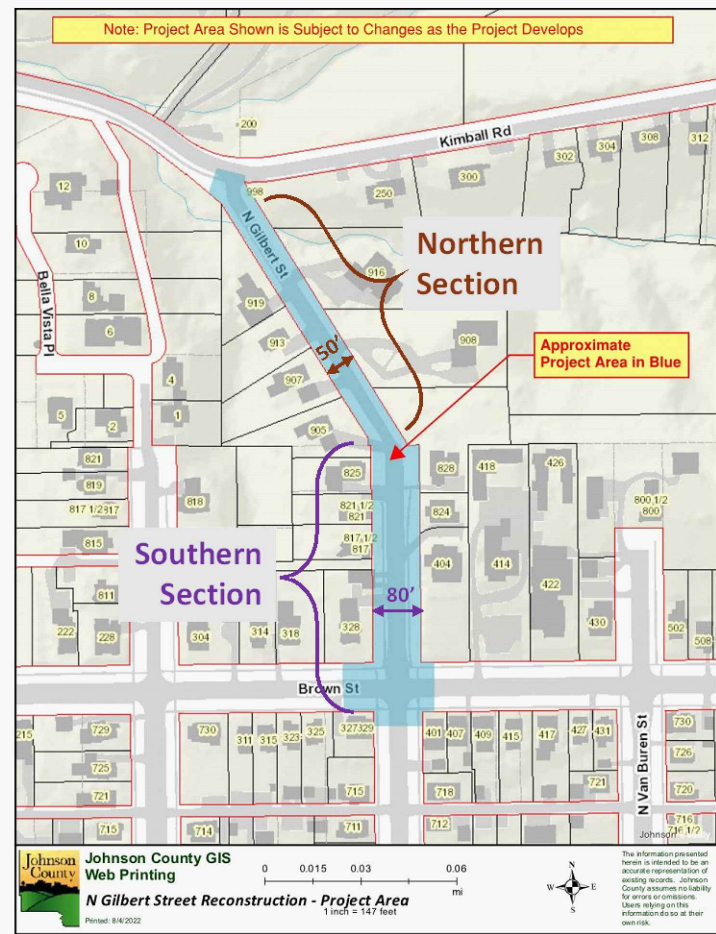
"ALTERNATIVE 1" TYPICAL CROSS SECTIONS



- NOTES**
- NO ON-STREET PARKING IS PERMITTED WITH A STREET WIDTH OF 22-FT
 - PROPOSED SIDEWALKS ARE 4-FT WIDE WITH PASSING SPACES 5-FT WIDE
 - SOME CONFLICTS ARE EXPECTED WITH EXISTING FEATURES BUT LESS SO THAN "ALTERNATIVE 2"



"ALTERNATIVE 2" TYPICAL CROSS SECTIONS



- NOTES**
- PROPOSED WIDTH OF 26-FT PERMITS ALTERNATING ON-STREET PARKING
 - PROPOSED SIDEWALKS 4-FT WIDE WITH 5-FT WIDE PASSING SPACES
 - HAS POTENTIAL CONFLICTS WITH EXISTING FEATURES. EXPECTED TO BE MORE NUMEROUS COMPARED WITH "ALTERNATIVE 1"

